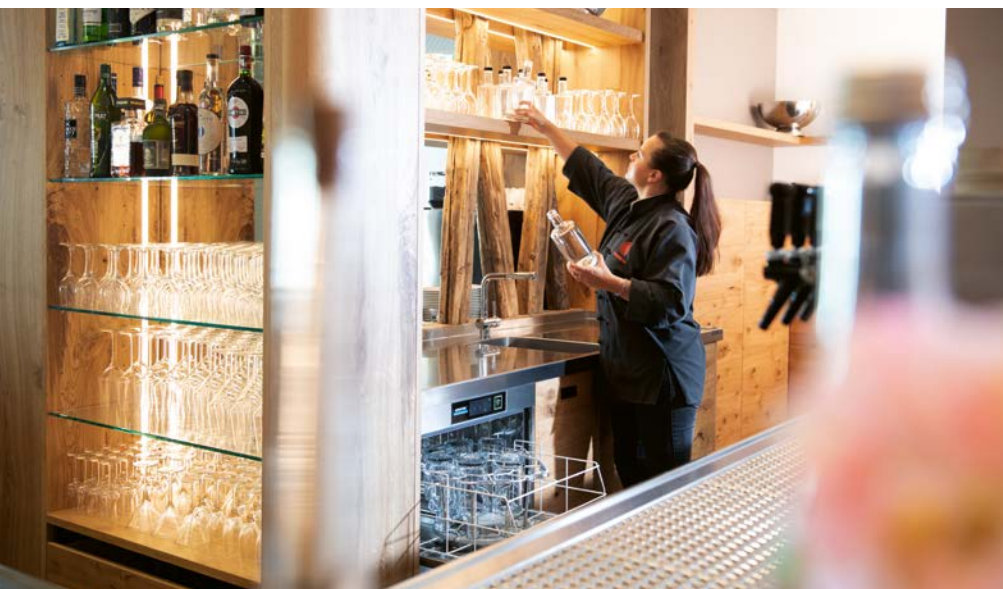




# A SMARTER SOLUTION.

Bottles washed clean. In less than a minute.





## 100 % CLEAN.

Water in your own bottles or carafes. Filled from a tap or water dispenser. More and more restaurateurs serve water to their guests in this way – and require a warewashing solution for this. Winterhalter has developed a bottle rack and a special adapter; any UC Series warewasher can become a bottle-washing system. Water is injected into the bottle directly via a special jet. This provides cleaning quality and hygiene that is certified in accordance with DIN SPEC 10534. All UC Series warewashers can accommodate the bottle rack.

### ADVANTAGES

- ✓ Up to 8 perfectly washed bottles in less than 1 minute
- ✓ Suitable for bottles with a base diameter of up to 100 mm
- ✓ Certified hygiene levels according to DIN SPEC 10534
- ✓ Switching operation is possible at any time – simply replace the bottom wash field with the bottle rack adapter
- ✓ Can be accommodated by all Winterhalter UC Series undercounter warewashers

### IT'S THAT EASY

1. Open the warewasher and remove the lower wash field.
2. Insert the special bottle rack adapter into the manifold.
3. The new bottle rack is ready to use. Done!



### TECHNICAL DATA

Bottle rack		small for UC-S	large for UC-M, UC-L and UC-XL
Number of bottles		8	8
WxDxH	mm	400 x 400 x 227	500 x 500 x 227
Maximum bottle height	mm	280	UC-M: 280, UC-L and UC-XL: 375
Item number		60 005 502	60 005 500