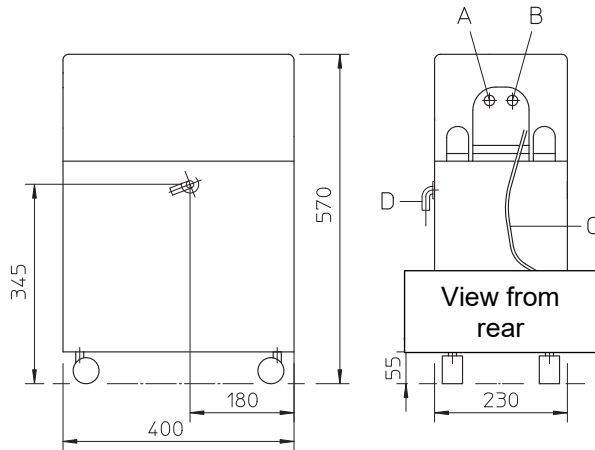
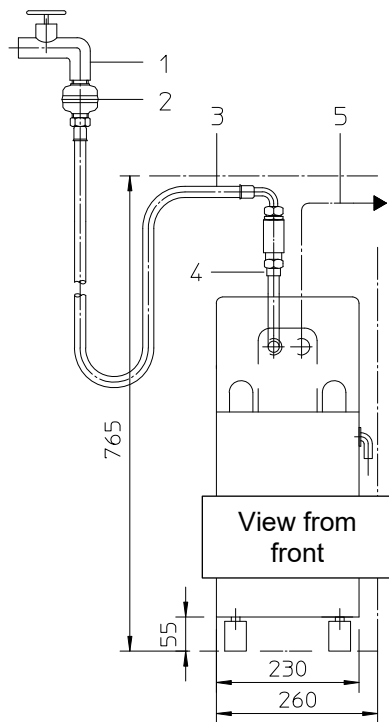


## Position of the connections



- |          |  |
|----------|--|
| <b>A</b> | Water drain<br>(softened water);<br>G 3/4" external thread   |
| <b>B</b> | Water supply (raw water)<br>G 3/4" exterior thread;<br>min. 1.5 bar; max. 6 bar;<br>max. 50 °C;<br>max. 29°dH total hardness |
| <b>C</b> | Regeneration water<br>1/2" hose; 2000 mm long  |
| <b>D</b> | Safety overflow<br>1/2" connection   |

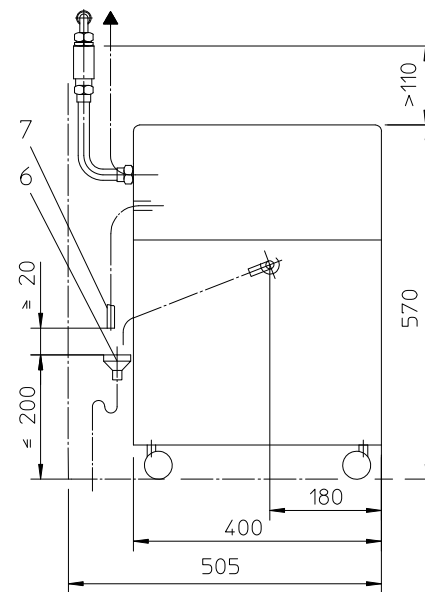
## Connection Diagram



If space is limited, the water safety device (pos. 4) can also be installed on to the incoming water supply.

### Note:

- Top edge of the combination connector must be at least 110 mm above the top edge of the MonoMatik 3
- Vertical installation position
- Install in direction of flow



**INFO** Items at Pos. 1 to 4 and Pos. 6 are not part of the MonoMatik 3 installation kit

**A water safety device (4) must be used in order for the MonoMatik 3 to be operated in accordance with DIN requirements. A kit is available from Winterhalter for this purpose.**

**The kit contains a backflow preventer type HD in accordance with DIN EN 1717.**

**National installation and operating regulations must also be complied with!**

The system can also be installed in reverse.

Provide on-site connections next to the device

- |   |   |
|---|---|
| 7 | Waste water hose  |
| 6 | Waste water funnel with trap                                |
| 5 | Hose to warewasher  |
| 4 | Water safety device   |
| 3 | Supply hose; 2 x G 3/4" union nut                           |
| 2 | Dirt trap; 1 x G 3/4" union nut; 1 x G 3/4" external thread |
| 1 | Water stop cock on-site, G 3/4" external thread             |

89013502-01; en

Prepared: 21.12.2022 sch

Connection diagram  
**MonoMatik 3 softener**

**winterhalter®**