

Exclusion of liability

Connectin of a competitor's dosing unit to Winterhalter warewashers

§ 1 Definitions

The following exclusion of liability applies to the commercial dishwashing machines of the series stated above, manufactured by the company Winterhalter Gastronom GmbH.

The exclusion of liability covers the retrofitting of competitor's dosing units on a dishwashing machine manufactured by Winterhalter Gastronom GmbH.

With the aid of these dosing units, detergent and rinse aid solutions are automatically introduced in pre-set amounts into the dishwashing machines during the washing process.

Competitors' dosing units are any dosing units which are not produced or distributed by Winterhalter Gastronom GmbH.

These shall include any units which were produced or distributed by Winterhalter Gastronom GmbH but for which retrofitting was explicitly prohibited by Winterhalter Gastronom GmbH.

Compliance with the following general and specific safety notes is necessary in all cases when installing a competitor's dosing unit.

If these notes are ignored, Winterhalter Gastronom GmbH shall not be liable to any party for any damages arising from the improper installation of a competitor's dosing unit insofar as permissible under applicable law.

The "customer" for the purposes of this exclusion of liability is any user of a dishwashing machine from Winterhalter Gastronom GmbH which was acquired from Winterhalter Gastronom GmbH by purchase, hire or leasing.

"Authorized specialist personnel" for the purposes of this exclusion of liability are any persons explicitly entrusted by Winterhalter Gastronom GmbH with the installation of competitors' dosing units and specially instructed by Winterhalter Gastronom GmbH regarding the installation of such units.

"Approved installation and replacement parts" are any parts which are only and exclusively obtainable from the Winterhalter company or from authorized dealers.

§ 2 General safety notes

Winterhalter Gastronom GmbH shall supply those persons authorized to perform retrofitting of competitors' dosing units with a module-specific instruction manual indicating the optimum installation points on the machine for a competitor's dosing unit.

A competitor's dosing unit may only be installed with the use of these installation points.

This instruction manual also contains precise step-by-step instructions for installing a competitor's dosing unit.

The installation of conductivity-controlled dosing units of competitors is not appropriate for dishwashing machines with built-in water softeners as regeneration salt can enter the tank and cause errors in the data measured for the wash water.

There is no need to fit additional dosing nipples.

All dishwashing machines from Winterhalter Gastronom GmbH are already fitted with dosing nipples for detergent and rinse aid solutions for connection to a competitor's dosing unit.

These dosing nipples are designed for the connection of tubes with an inside diameter of 5 mm.

Before connecting the tubes, the covering caps fitted at the factory must be removed from the dosing nipples.

Dosing tubes must be secured on the dosing nipples with hose clamps to prevent unintended detaching.

In cases where the installation of tubes with a larger inside diameter is intended, the additional instructions in the installation instructions must be followed.

§ 3 Specific safety notes

Competitors' dosing units may only be installed by the specialist personnel instructed by Winterhalter Gastronom GmbH.

Competitors' dosing units must not be installed by persons who have not been instructed in the installation of competitors' dosing units.

Before installing the competitor's dosing unit, the mains power switch of the dishwashing machine must be set to "OFF" and must be specially secured to prevent it from being switched on in any way during the installation process. The dishwashing machine can only be considered de-energized when all poles of the mains power switch have been disconnected.

Retrofitted dosing units of competitors must be integrated into the dishwashing machine's protective earth circuit (PE).

Retrofitted tubes and cables etc. must be laid and secured on or in the dishwashing machine in such a way that they do not come into direct contact with hot parts of the dishwashing machines (the boiler, tank, heating elements) and do not run in close proximity to those parts.

Retrofitted tubes and cables etc. must always be laid and secured without any kinks whatsoever.

Openings in the housing must always be made in such a way that the IP protection as stated on the rating plate of the dishwashing machine is in no way impaired.

Competitors' dosing units must not be installed on the inside of dishwashing machines from Winterhalter Gastronom GmbH or on panelling or housing components of such machines. Under no circumstances is such installation approved by Winterhalter Gastronom GmbH.

Winterhalter Gastronom GmbH shall not be liable for any installed parts which do not meet the requirements of the generally applicable technical safety standards and in particular for any such parts which have no technical accreditation.

§ 4 Exclusion of liability

Insofar as permissible under applicable law, Winterhalter Gastronom GmbH shall not be liable for any damage arising from defects or consequential damage incurred by the customer or a third party due to non-compliance with the above provisions regarding the installation of a competitor's dosing unit. This exclusion of liability applies in particular to claims for damages arising from damage to the dishwashing machine itself or arising from damage to the dosing unit or claims for damages arising from the injury or death of a person. Claims for lost earnings are likewise excluded. In particular Winterhalter Gastronom GmbH shall not be liable in the case of performance of the installation work by personnel not selected by Winterhalter Gastronom GmbH, the use of inappropriate tools, or the use of installation points other than those indicated.

All liability is likewise excluded in cases where the infringement was committed by an employee or agent of the customer.

The customer hereby also exempts Winterhalter Gastronom GmbH from any and all claims for damages incurred by third parties and arising from the improper installation of a competitor's dosing unit or from the installation of technically unsuitable parts. The customer shall be liable for claims of this kind.

§ 5 Severability clause

If one of the above provisions should become ineffective or void, the remainder of the agreement shall not be affected.

The ineffective or void provision shall be substituted by whichever legal regulation most closely serves the commercial and legal interests of the parties.

Installation instructions for connecting competitors' dosing devices to Winterhalter PT-M, PT-L and PT-XL warewashers

1. General notes

These instructions contain the optimum installation points on the machine and the procedure for connecting external competitors' dosing devices.

Competitors' dosing devices are any devices that were not produced by Winterhalter Gastronom GmbH.

Installing competitors' dosing devices inside or on trim panels of Winterhalter warewashers is not permitted and we provide no support for this, see Exclusions of liability.

For machines with integrated softener:

The use of conductivity-controlled dosing devices is not appropriate as regeneration salt can enter the tank and cause errors in the measured values.

Dosing nipples for detergent and rinse aid dosing are already fitted in the machines (► 4.2).

All dosing nipples are designed for tubes with an internal diameter of 5 mm.

2. Safety notes



Danger

Danger to life. Live components.

When performing installation and maintenance work, unplug the machine from the power network. Check that there is no voltage.

- Competitors' dosing devices must be connected to a Winterhalter warewasher by an electrical company authorised by the relevant electricity supplier according to local standards and regulations.
- Competitors' dosing devices must be incorporated into the machine's protective circuit (PE).
- The machine is not without power until the mains disconnecter has been switched off.

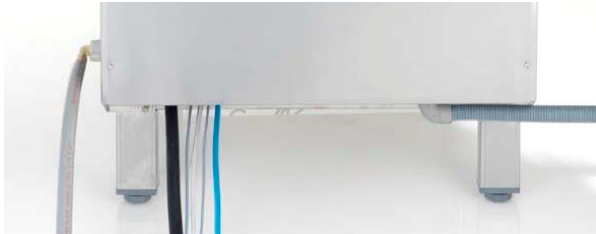
3. Mechanical connection



Danger to life. Live components.

When performing installation and maintenance work, unplug the machine from the power network. Check that there is no voltage.

- Turn off the on-site mains disconnecter and secure it against being switched back on unintentionally
- Remove the front panel.
- If there is a Winterhalter dosing device fitted, remove it and isolate the electrical connections.



Back view



Right view

IMPORTANT At the back and the right side of the base frame there are bushings for hoses and cables from the external dosing device to the dosing nipple of the machine. In order to maintain the IP rating, these bushings have to be used.

Observe the following information when laying the dosing tubes and cables:

- Dosing tubes and cables may not be kinked.
- Dosing tubes and cables may not be in direct contact or in the vicinity of hot components (boiler, tank, heating elements).
- Secure the dosing tubes on the dosing nipples with appropriate fixings to prevent unintended detaching.

3.1 Conductivity-controlled dosing devices for liquid dosing: conductivity electrode

IMPORTANT The use of conductivity-controlled dosing devices is not appropriate for machines with integrated softener as regeneration salt can enter the tank and cause errors in the measured values.

- Open hood.
- Remove tank cover and filter cylinder.
- Ensure accessibility for installation.
- Place rags or suitable paper in the inside of the tank so that the drilling chips cannot cause any scratches and can be easily removed.
- For the position of the conductivity electrode refer to the drawing in chapter ► 4.3.
- Drill hole.

INFO The size of hole depends on the conductivity electrode.

- Carefully deburr the drilled hole.

IMPORTANT Carefully remove drilling chips from the inside area (if necessary, use vacuum cleaner) in order to prevent the jet systems from blocking up and rust from forming in the machine's tank.

- Install conductivity electrode.
- Install dosing device.

INFO For the positioning of the dosing nipples refer to the figure in chapter ► 4.2.

3.2 Conductivity-controlled dosing devices for powder dosing: conductivity electrode and inflow point

- Open hood.
- Remove tank cover and filter cylinder.
- Ensure accessibility for installation.
- Place rags or suitable paper in the inside of the tank so that the drilling chips cannot cause any scratches and can be easily removed.
- For the positions of the conductivity electrode and inflow point refer to the drawing in chapter ► 4.4.
- Drill holes.

INFO The size of the holes depends on the conductivity electrode and inflow point.

- Carefully deburr the drilled holes.

IMPORTANT Carefully remove drilling chips from the inside area (if necessary, use vacuum cleaner) in order to prevent the jet systems from blocking up and rust from forming in the machine's tank.

- Install conductivity electrode.
- Install dosing device.

If the injection hose is guided through the housing:

- Install edge trim.
- Seal any holes.
- Inform the customer that the spray water protection of the warewasher will be reduced.

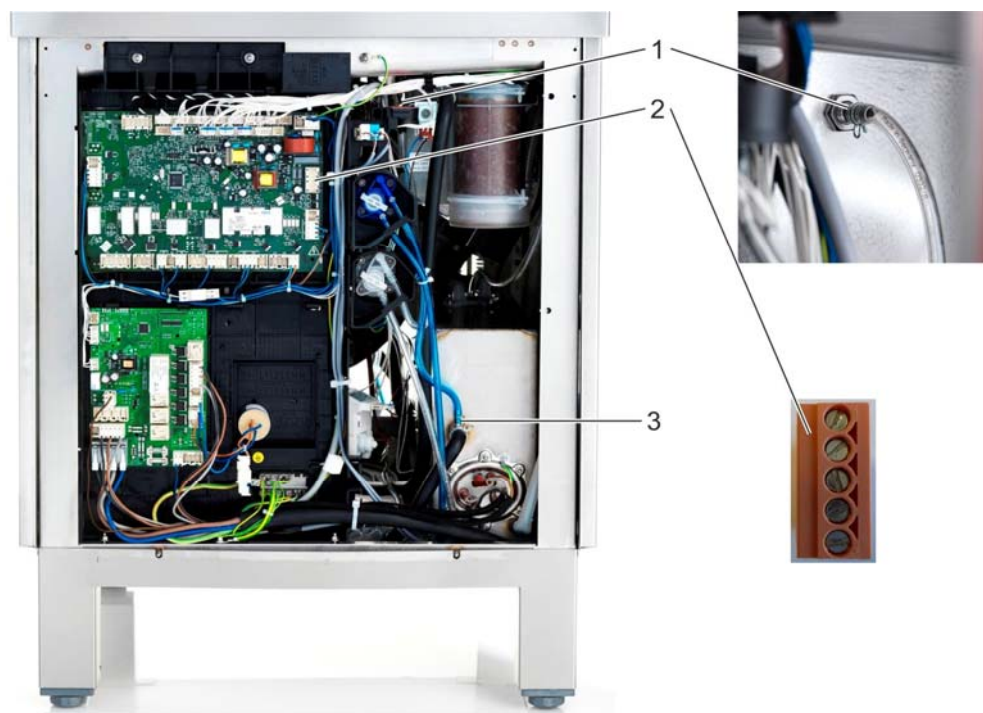
4. Position of the dosing points

4.1 Water volumes

		Dishes	Cool	effect	Cutlery	EnergyPlus	HighTemp
Tank capacity	[l]	35	35	35	35	35	35
Rinse water consumption* (driven rinse system)	[l / rack]	2.4 (2.0)	4.0 (3.4)	2.4 (2.0)	3.4 (3.0)	2.4 (2.0)	3.8 (3.8)

* In perfect conditions. The vernier adjustment is carried out at the commissioning.

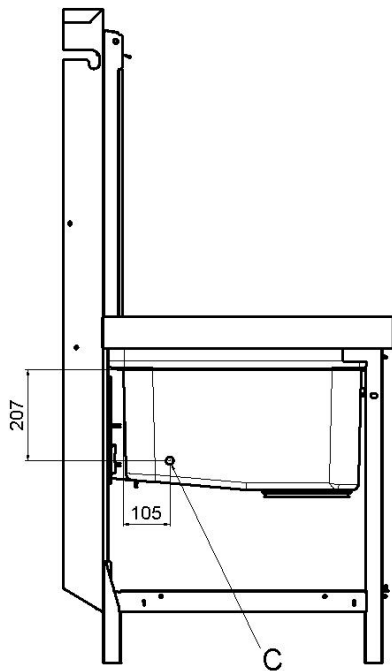
4.2 Dosing points



1	Detergent dosing nipple
2	Transfer strip with red plug for the connection of external dosing devices
3	Rinse aid dosing nipple

4.3 Position of the conductivity electrode (C) (liquid dosing)

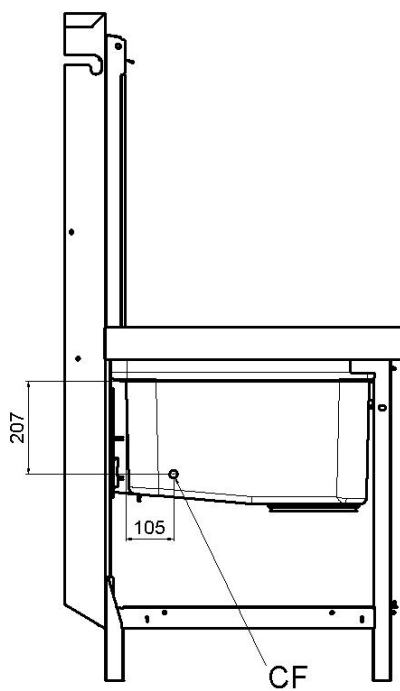
Left view



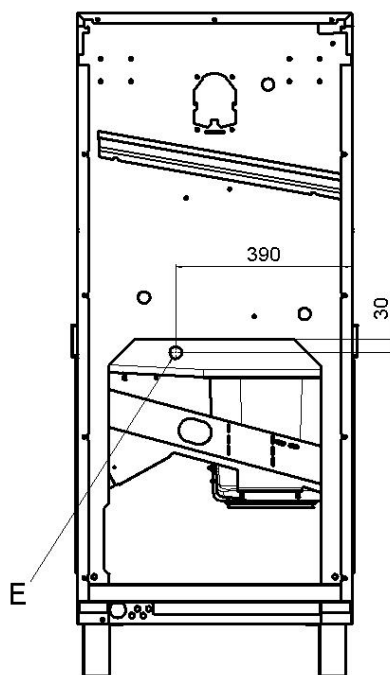
C	Position of conductivity electrode
---	------------------------------------

4.4 Positions of the inflow point (E) and the conductivity electrode (CF) (powder dosing)

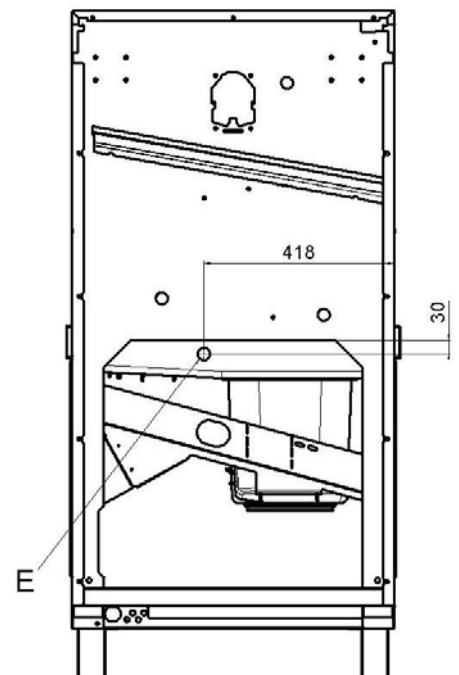
PT-M, PT-L, PT-XL
Left view



PT-M
Rear view



PT-L, PT-XL
Rear view



CF	Position of conductivity electrode
E	Position of inflow point

5. Electrical connection




Danger to life. Live components.

When performing installation and maintenance work, unplug the machine from the power network. Check that there is no voltage.

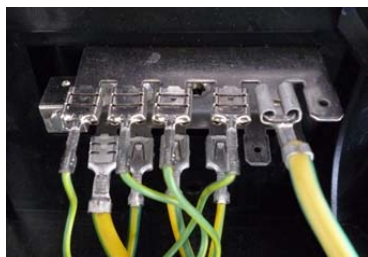
- The current draw on the transfer strip (► 4.2) must not exceed 0.5 A. A higher current draw may trigger the upstream 4.0 A control-circuit fuse, as the sum of all connected actuators may otherwise exceed the permitted maximum continuous current.
- The transfer strip can be assigned various signals depending on how the parameters P704 (detergent) and P709 (rinse aid) are set.

Terminals (arranged from top to bottom)

	Terminal	Voltage is on	Condition	Restriction
	L1	continuous voltage		
	N			
	Rinse (O18)	parallel to solenoid valve (O7) – while the machine is filling – during rinsing	P709 = 0 a)	c)
	Wash (O20)	while the circulating pump is running	a)	c), d), e)
	Fill / Water (O17)	while the machine is filling	P704 = 0 a), b)	
		parallel to solenoid valve (O7) – while the machine is filling – during rinsing	P704 = 1 a), b)	

- a) hood / door closed
- b) minimum water level in the tank
- c) not in the self-cleaning programme
- d) not while the machine is filling
- e) not in descaling or basic cleaning programme

- Connect dosing device to the transfer strip.



- Connect the yellow-green wire of the dosing device to the distributor of the earth wires.

Setting the parameters:

- Tap the following buttons in turn:

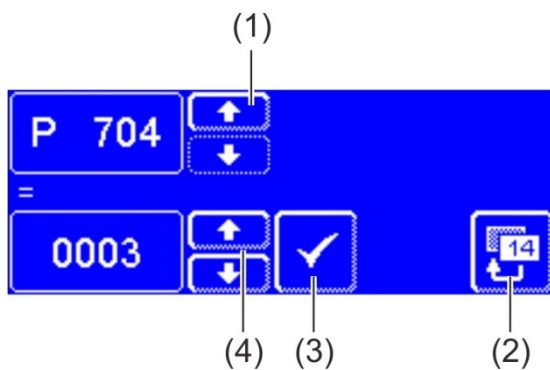


Type in „1575“



INFO

Incorrectly entered digits can be corrected with the ◀ button.



- Using the scroll buttons (4), set the value of parameter P704 (detergent).
- Press the button (3) to save your input.
- Press the scroll button (1) if parameter P709 (rinse aid) must also be set.
 - P709 is displayed.
- Using the scroll buttons (4), set the value of parameter P709.
- Press the button (3) to save your input.
- Press the back button (2) to exit from the menu.

6. Final work

- Once the machine and the dosing device have been properly installed and started, run several washing programmes. During these programmes, check the machine for leaks, particularly on the newly installed components.
- Carry out electrical safety test in accordance with EN 60335-1, EN 60335-2 or the appropriate national standard.
- Switch off the machine.
- Switch off the local mains disconnecter.
- Install panel.