

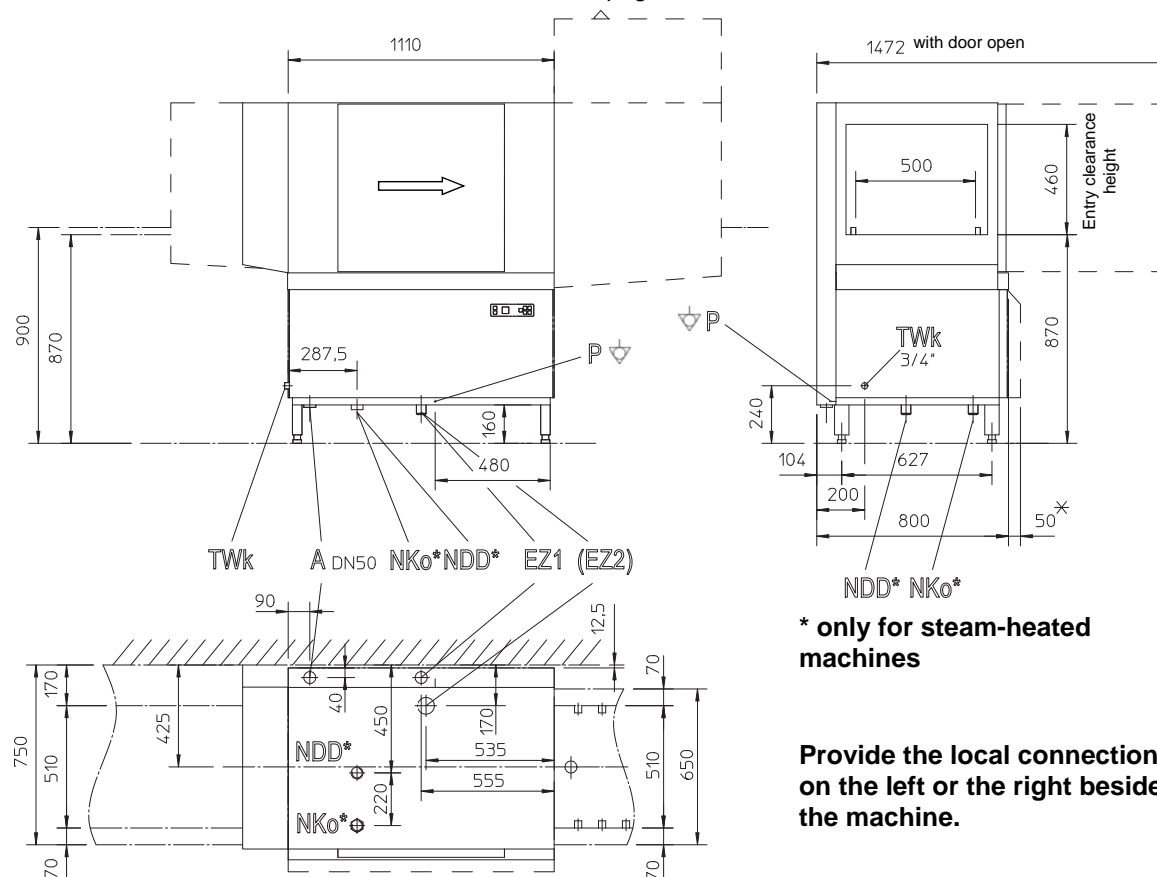
## Connection diagram

### Rack conveyor dishwashing machine STR 110 / 130; STR 110 / 130 Energy

General dimensions and illustration of connecting points (electrical, water, waste water, steam)

Illustration of different table versions see page 2

Illustration of all machine versions with dimensions see page 3 - 5



**\* only for steam-heated machines**

**Provide the local connections on the left or the right beside the machine.**

## Explanation of abbreviations

|     |  |  |
|-----|--|--|
| A   | Waste water connection (DN50)  | From building: DN 70 with trap; Floor drain or max. 150 mm above finished floor level      |
| TWk | Water connection (G 3/4", external thread)   | On the machine: flexible hose (1.5 m) with dirt filter and union nut (G 3/4")              |
| P   | Connection for equipotential bonding system in the building                            |  |
| EZ1 | Cable gland for electrical connection cable  | 1.0 m cable addition needed from point EZ for the connection of the cable in the switchbox |
| EZ2 | Cable gland for electrical connection cable (at 3x200 V and 3x230 V with 24 kW boiler) | Total connected load: Page 3 - 5   |

## Water connection

|   | with pressurized boiler  | with non pressurized boiler                     |
|---|--|---|
| Water inlet temperature   | max. 60 °C*  |   |
| Water quality   | softened ( $\leq 3 \text{ °dH} / 3.8 \text{ °e} / 0.54 \text{ mmol/l}$ ) |   |
| Flow pressure / flow rate after a water treatment unit possibly fitted upstream | 250-600 kPa; (2.5-6.0 bar) at least 15 l/min**                           | 100-600 kPa; (1.0-6.0 bar) at least 15 l/min*** |

\* STR 110 Energy / STR 130 Energy: 10-20 °C

\*\* STR 110 Energy / STR 130 Energy: at least 6 l/min (not for UK, Australia)

\*\*\* STR 110 / 130; STR 110 / 130 Energy: at least 5 l/min (only UK, Australia)

## Exhaust air

conduct away in accordance with VDI 2052 (ambient air data for kitchens).

STR 110 Energy, STR 130 Energy:

approx. 600 m³/h; approx. 35°C; approx. 70 - 95% relative humidity

Exhaust air system in the building may not be directly connected in order to prevent the temperatures in the machine from being affected.

## only for steam-heated machines (Special equipment)

|     |                            |  |
|-----|----------------------------|--|
| NDD | Saturated steam connection | Sleeve with internal thread; (G 1 1/4")    |
| NKO | Condensation drain outlet  | Union nut with internal thread; (G 1 1/4") |

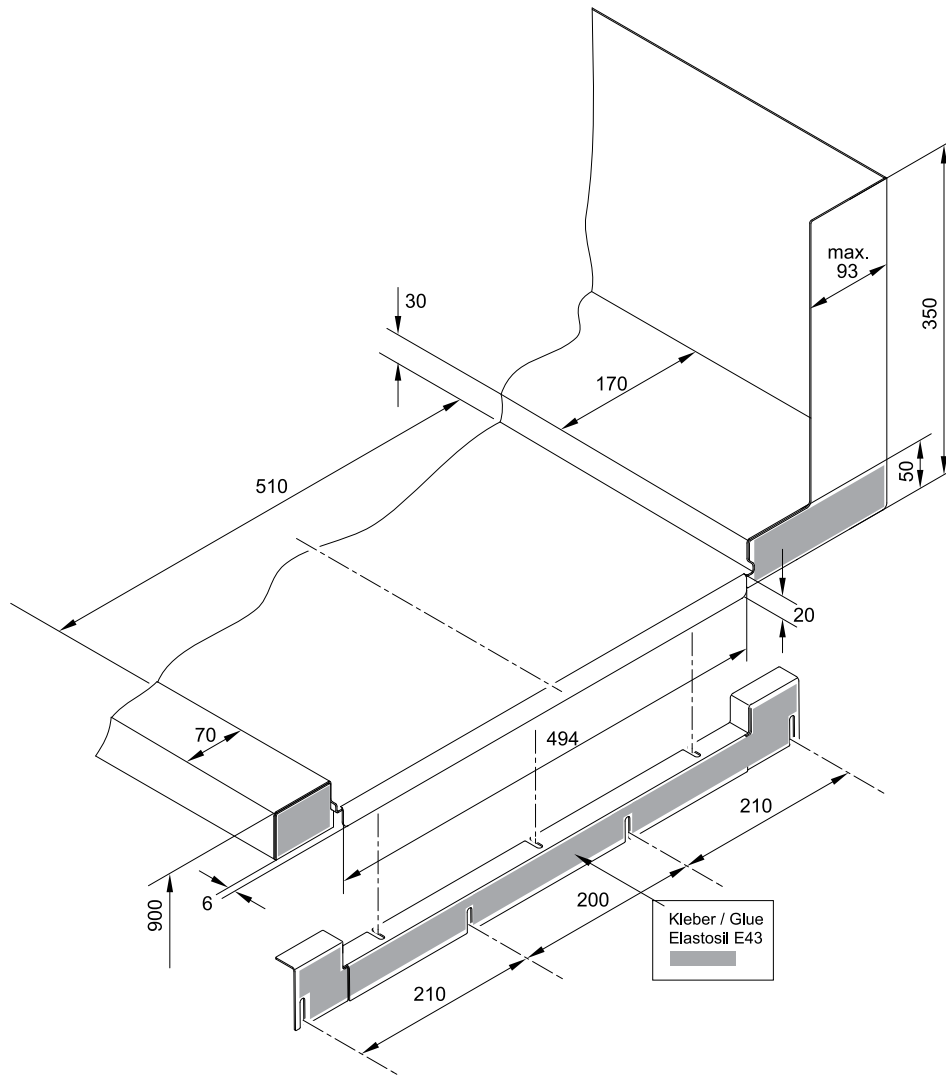
The pass-through direction can be from left to right or from right to left. The connections to the machine remain the same.

The machine is shown in pass-through direction left - right.

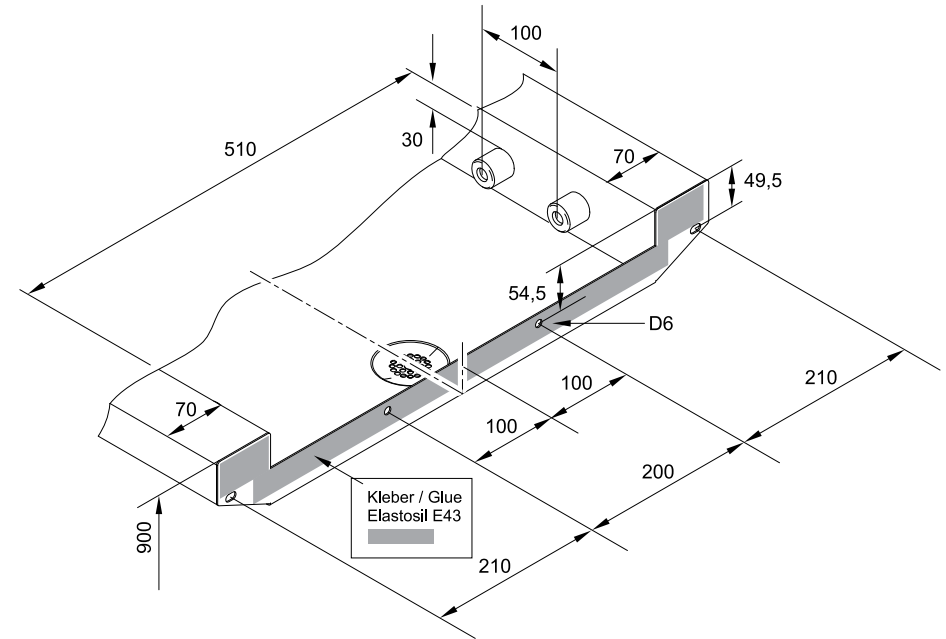
The vertical dimensions can be adapted by +/- 25 mm using adjustable legs.

The working height of electrically heated machines can also be 850 mm (special equipment).

## Recommended table design



Inlet table

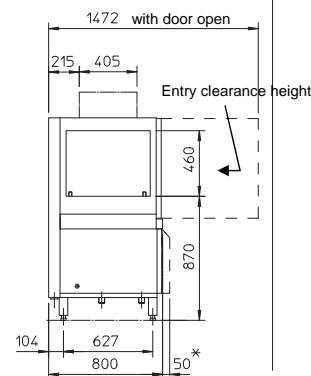
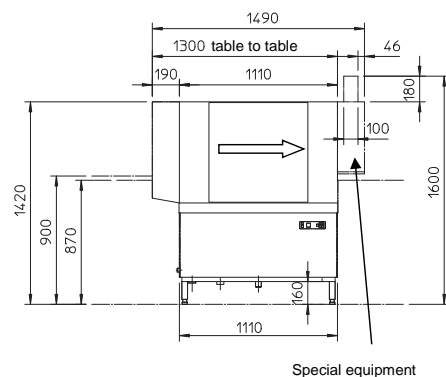


Roller exit table

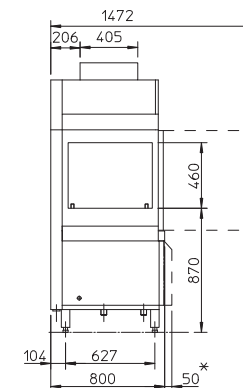
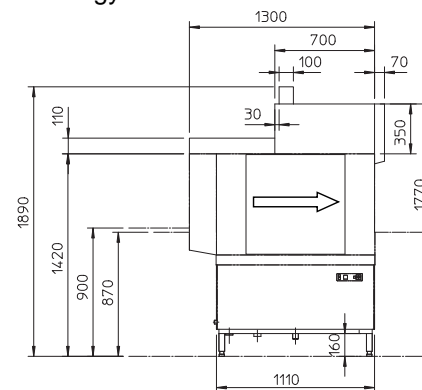
The design of the roller exit table must include a table limit switch to prevent dish breakage.

## Dimensions / Total connected load: Machine without pre-cleaning zone / without drying zone

STR 110



STR 110 Energy



\* only for steam-heated machines

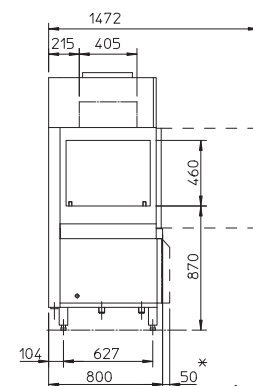
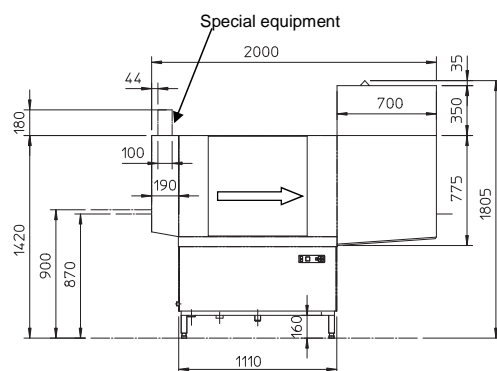
| Water inlet temperature | Total connected load |              |
|-------------------------|----------------------|--------------|
|                         | electrically heated  | steam heated |
| 10-20°C                 | 36.5 kW **           | 2.5 kW       |
| 21-50°C                 | 30.5 kW **           |              |
| 51-60°C                 | 24.5 kW **           |              |

| Water inlet temperature | Total connected load |              |
|-------------------------|----------------------|--------------|
|                         | electrically heated  | steam heated |
| 10-20°C                 | 30.7 kW **           | 2.5 kW       |

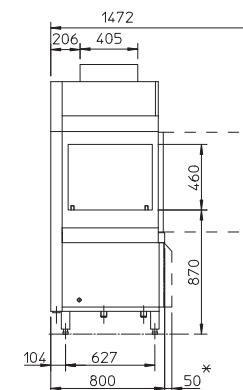
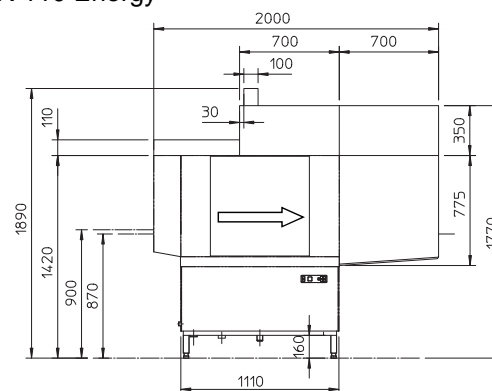
\*\* (machines with non pressurized boiler + 0.2 kW)

## Dimensions / Total connected load: Machine without pre-cleaning zone / with straight drying zone

STR 110



STR 110 Energy



\* only for steam-heated machines

| Water inlet temperature | Total connected load |              |
|-------------------------|----------------------|--------------|
|                         | electrically heated  | steam heated |
| 10-20°C                 | 41.0 kW **           | 7.0 kW       |
| 21-50°C                 | 35.0 kW **           |              |
| 51-60°C                 | 29.0 kW **           |              |

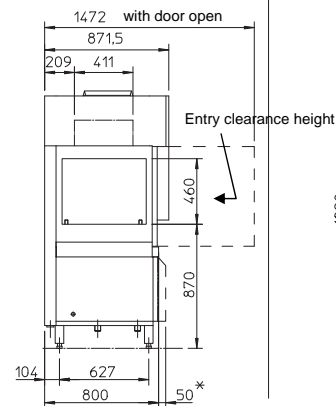
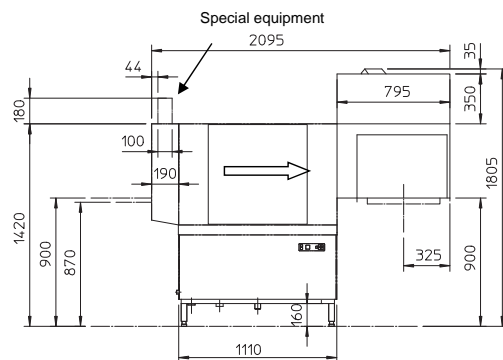
| Water inlet temperature | Total connected load |              |
|-------------------------|----------------------|--------------|
|                         | electrically heated  | steam heated |
| 10-20°C                 | 35.2 kW **           | 7.0 kW       |

\*\* (machines with non pressurized boiler + 0.2 kW)

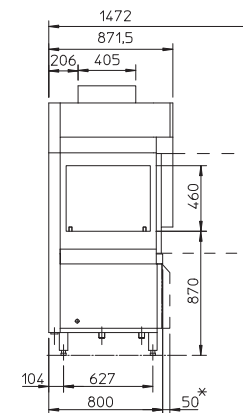
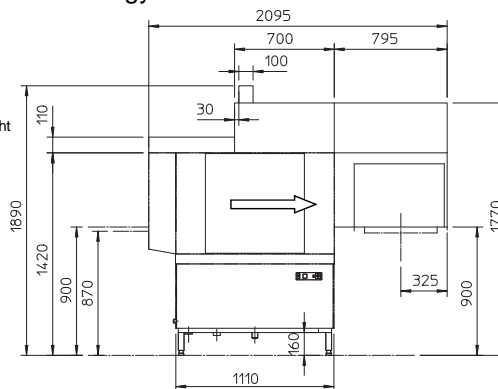
The pass-through direction can be from left to right or from right to left  
The machine is shown in pass-through direction left - right.

## Dimensions / Total connected load: Machine without pre-cleaning zone / with corner drying zone

STR 110



STR 110 Energy



\* only for steam-heated machines

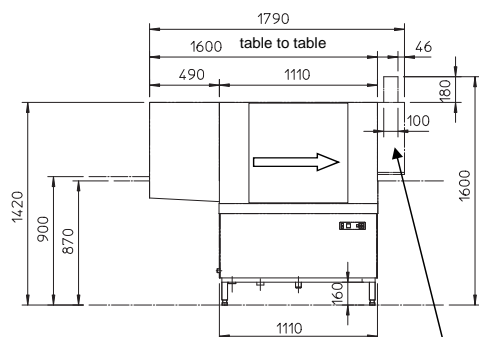
| Water inlet temperature | Total connected load |              |
|-------------------------|----------------------|--------------|
|                         | electrically heated  | steam heated |
| 10-20°C                 | 41.0 kW **           | 7.0 kW       |
| 21-50°C                 | 35.0 kW **           |              |
| 51-60°C                 | 29.0 kW **           |              |

| Water inlet temperature | Total connected load |              |
|-------------------------|----------------------|--------------|
|                         | electrically heated  | steam heated |
| 10-20°C                 | 35.2 kW **           | 7.0 kW       |

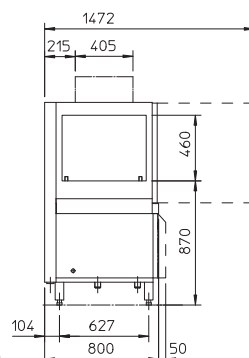
\*\* (machines with non pressurized boiler + 0.2 kW)

## Dimensions / Total connected load: Machine with pre-cleaning zone / without drying zone

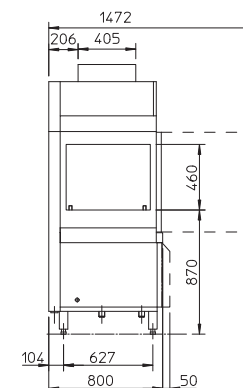
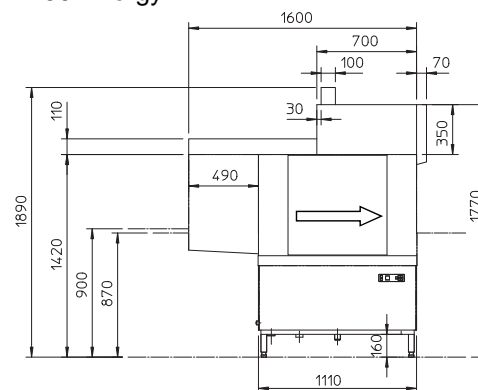
STR 130



Special equipment



STR 130 Energy



\* only for steam-heated machines

| Water inlet temperature | Total connected load |              |
|-------------------------|----------------------|--------------|
|                         | electrically heated  | steam heated |
| 10-20°C                 | 38.8 kW **           | 2.8 kW       |
| 21-50°C                 | 32.8 kW **           |              |
| 51-60°C                 | 26.8 kW **           |              |

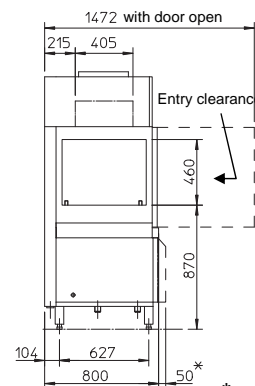
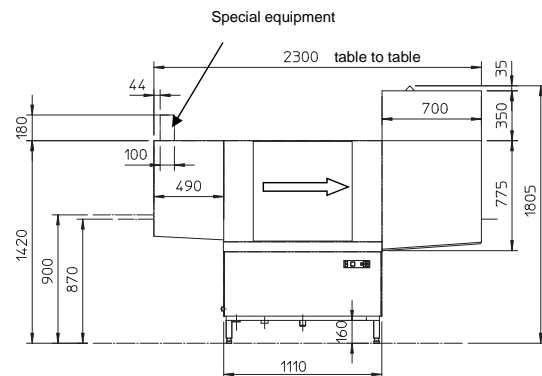
| Water inlet temperature | Total connected load |              |
|-------------------------|----------------------|--------------|
|                         | electrically heated  | steam heated |
| 10-20°C                 | 33.0 kW **           | 2.8 kW       |

\*\* (machines with non pressurized boiler + 0.2 kW)

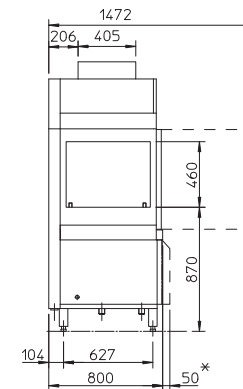
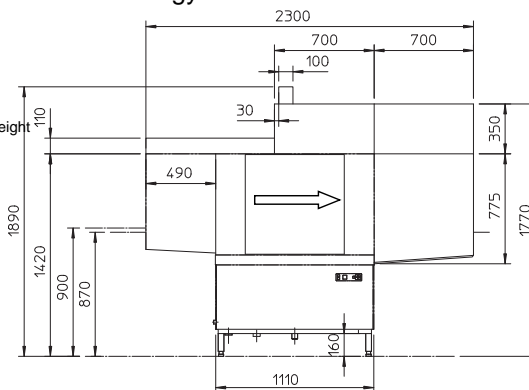
The pass-through direction can be from left to right or from right to left  
The machine is shown in pass-through direction left - right.

## Dimensions / Total connected load: Machine with pre-cleaning zone / with straight drying zone

STR 130



STR 130 Energy



\* only for steam-heated machines

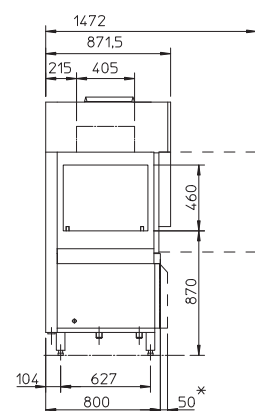
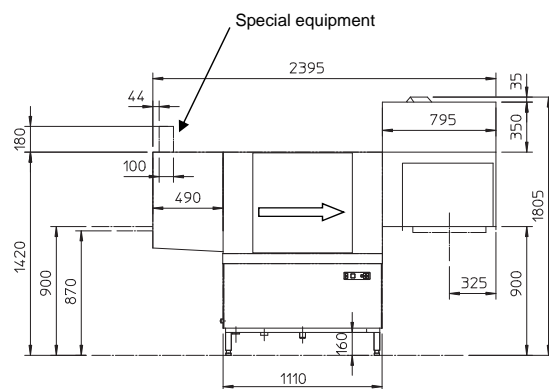
| Water inlet temperature | Total connected load |              |
|-------------------------|----------------------|--------------|
|                         | electrically heated  | steam heated |
| 10-20°C                 | 43.3 kW **           | 7.3 kW       |
| 21-50°C                 | 37.3 kW **           |              |
| 51-60°C                 | 31.3 kW **           |              |

| Water inlet temperature | Total connected load |              |
|-------------------------|----------------------|--------------|
|                         | electrically heated  | steam heated |
| 10-20°C                 | 37.5 kW **           | 7.3 kW       |

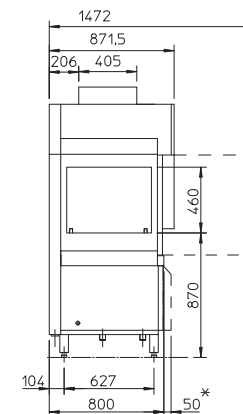
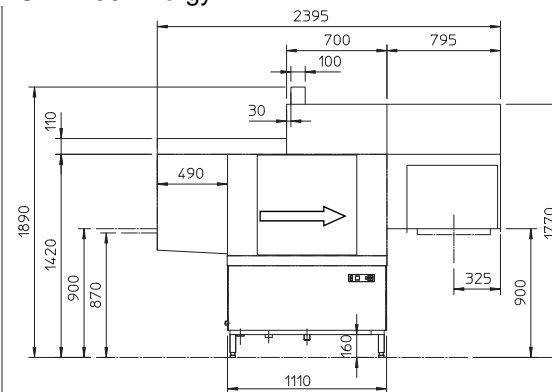
\*\* (machines with non pressurized boiler + 0.2 kW)

## Dimensions / Total connected load: Machine with pre-cleaning zone / with corner drying zone

STR 130



STR 130 Energy



\* only for steam-heated machines

| Water inlet temperature | Total connected load |              |
|-------------------------|----------------------|--------------|
|                         | electrically heated  | steam heated |
| 10-20°C                 | 43.3 kW **           | 7.0 kW       |
| 21-50°C                 | 37.3 kW **           |              |
| 51-60°C                 | 31.3 kW **           |              |

| Water inlet temperature | Total connected load |              |
|-------------------------|----------------------|--------------|
|                         | electrically heated  | steam heated |
| 10-20°C                 | 37.5 kW **           | 7.3 kW       |

\*\* (machines with non pressurized boiler + 0.2 kW)

The pass-through direction can be from left to right or from right to left  
The machine is shown in pass-through direction left - right.